

## CE-Conveyor Series

### Wrap Spring Clutches - for CDLR Pallet Applications

The CE Series of clutches are specifically designed for chain-driven, live roller (CDLR) pallet accumulation. Because of the rigorous demands of the pallet accumulation application, all of our CE conveyor clutches are constructed from solid hardened steel components rather than powder metal. Powdered metal components cannot withstand the high axial and radial loading that may occur when pallets jam in operation. The Super CES conveyor clutch is an upgrade to our standard CE conveyor clutch in that it incorporates durable needle bearings and thru hardened input shaft, rather than bronze bushing and case hardened input shaft.

#### Operation:

With the stop collar mechanically released and the input shaft rotating via chain-drive, the input shaft is coupled to the output sprocket for driving the rollers on a specific conveyor zone. If the stop collar is mechanically engaged by a pallet condition of the forward zone, the input shaft and output sprocket are de-coupled, while the input continues to overrun.

#### Super CES Features:

- Trouble-free design for long life
- Industrial grade needle bearing for super long life
- Thru-hardened 440c input shaft for long life
- 1,500 in-lb. torque rating, high torque to size ratio
- Case-hardened steel stop-collar for long life
- Complete with case hardened 40A21 sprocket for immediate installation
- Drop in replacement for a Standard CE clutch with 40A21 sprocket

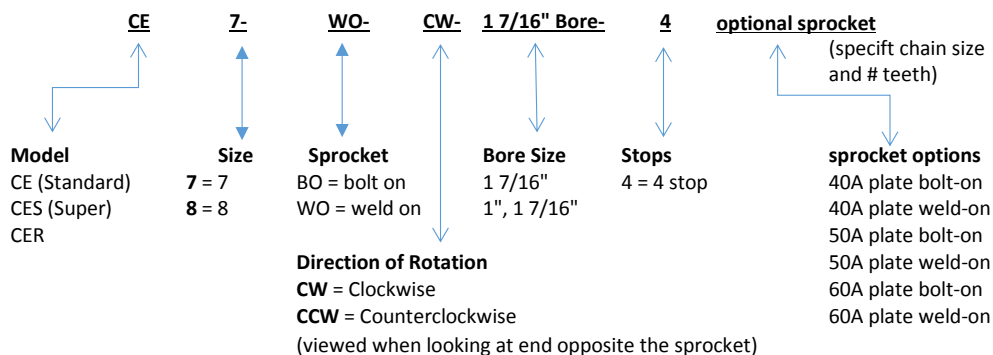
#### Standard CE Features:

- Trouble-free design for long life
- Bronze bushing
- Case-hardened input shaft
- 1,500 in-lb. torque rating, high torque to size ratio
- Available in both bolted-on and welded-on sprockets of 40-60 chain size

#### Options:

- Model CE-8, 2500 lb-in version available
- Model E-7 Solenoid operated package available

#### How to order:



The Super CES is only available in 1,500 in-lb. torque package, and 1 7/16" bore, and is pre-assembled with a 40A21 sprocket

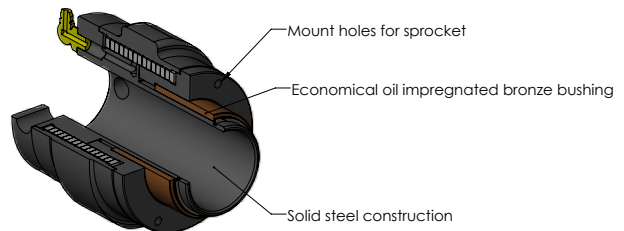
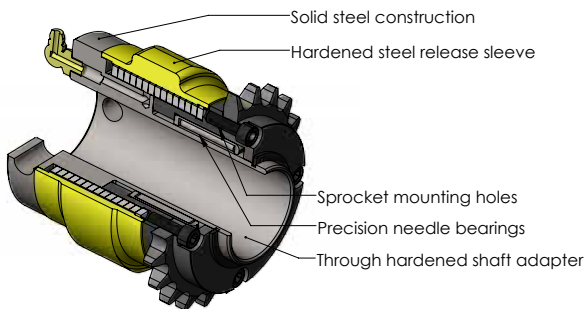
The CER is only available with integral DS60A16 sprocket

# CE-Conveyor Series

Wrap Spring Clutches - for CDLR Pallet Applications

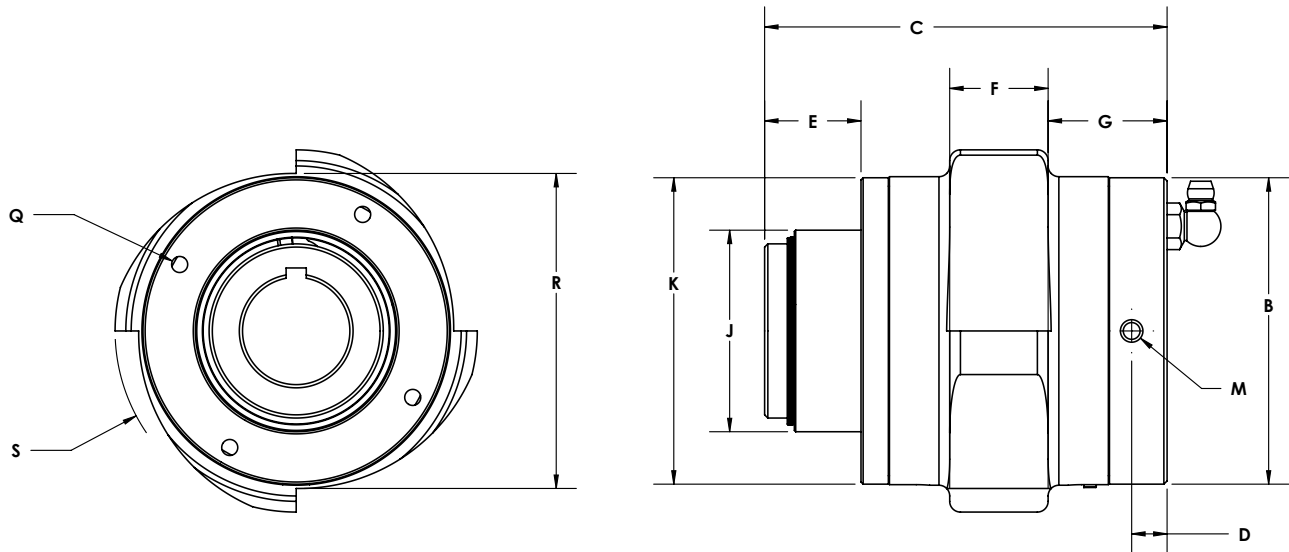
## CES-7 Super Conveyor Clutch

## CE-7 Standard Conveyor Clutch



Conveyor Series PERFORMANCE				
	CE-7 (WO or BO)	CES-7 Super	CER-7	CE-8 (WO or BO)
Static Torque	1,500 lb-in	1,500 lb-in	1,500 lb-in	2,500 lb-in
Inertia, rotating parts	2.0 lb-in <sup>2</sup>	2.0 lb-in <sup>2</sup>	5.5 lb-in <sup>2</sup>	3.0 lb-in <sup>2</sup>
Maxium radial bearing load at maxium speed	150 lbs.	150 lbs.	150 lbs.	300 lbs.
Maxium operating speed	400 RPM	400 RPM	400 RPM	300 RPM
Weight	4.0 lbs.	4.0 lbs.	8.1 lbs.	5.0 lbs.

## CE-Conveyor Series Dimensions and Specifications



Conveyor Series Dimensions											
Model	B (dia.)	C	D	E	F	G	H	J (dia.)	K (dia.)	R (dia.)	S (rad.)
CE-7 WO	2.85	3.75	0.325	0.88	1.00	1.10	0.625	2.00	2.50	2.95	1.69
CE-7 BO	2.85	3.75	0.325	0.88	1.00	1.10	0.625	2.00	2.50	2.95	1.69
CES-7	2.85	3.75	0.325	0.88	1.00	1.10	na	na	na	2.95	1.69
CER-7	2.85	5.04	0.275	0.88	1.00	1.10	na	na	na	2.95	1.69
CE-8 WO	3.05	3.75	0.325	0.88	1.40	0.53	0.625	2.00	2.50	3.25	1.88
CE-8 BO	3.05	3.75	0.325	0.88	1.40	0.53	0.625	2.00	2.50	3.25	1/1/1900

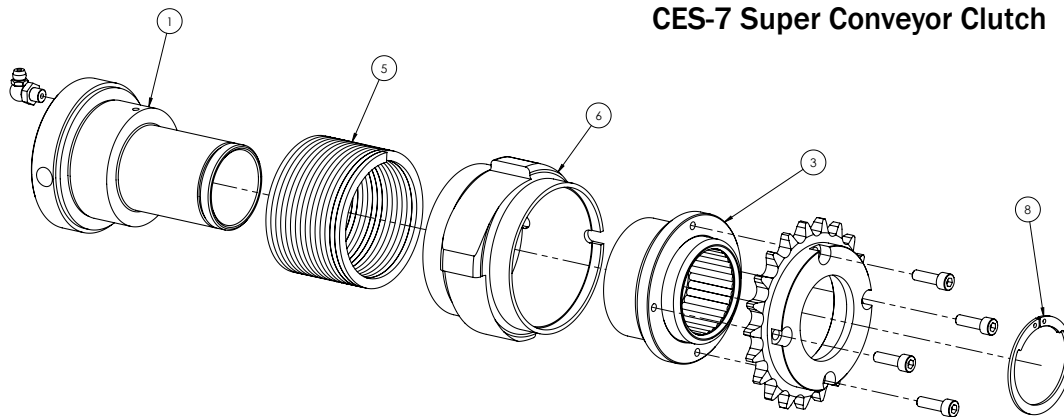
Conveyor Series Bore and Pin data					
		Bore	Key or Pin	Sprocket Bore J	Sprocket Mount Q
CE-7 BO		1" 1 7/16"	3/16" key, 10-24 set 3/8" pin	2.00 2.00	4 x 10-24 on a 2.50" b.c.
CE-7 WO		1" 1 7/16"	3/16" key, 10-24 set 3/8" pin	2.50 2.50	na
CES-7		1 7/16"		na <sup>2</sup>	na <sup>2</sup>
CER-7		1 3/16"	1/4" key, 10-24 set	na <sup>3</sup>	na <sup>3</sup>
CE-8 BO		1 7/16"	3/8" pin	2.00	8 x 1/4-20 on a 2.50" b.c.
CE-8 WO		1 7/16"	3/8" pin	2.50	na

<sup>2</sup>CES-7 includes integral 40A21 sprocket

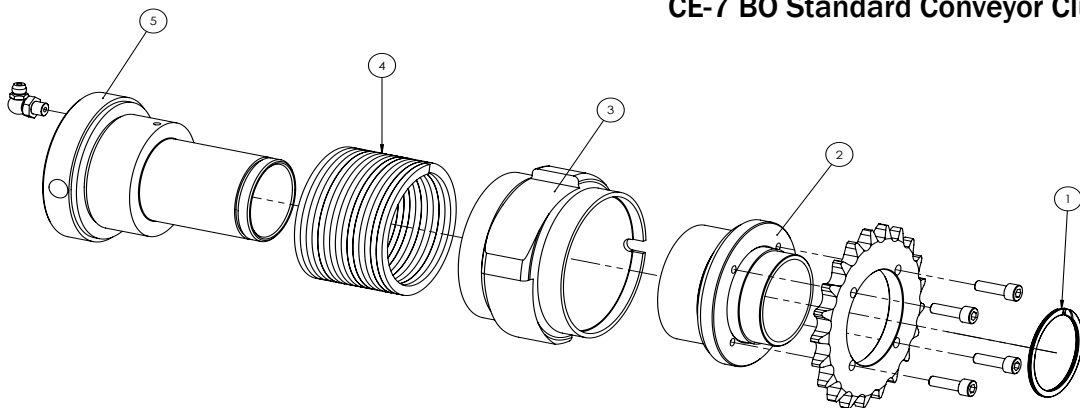
<sup>3</sup>CER-7 includes integral DS60A16 sprocket

# CE-Conveyor Series

## Component Parts



**CES-7 Super Conveyor Clutch**



**CE-7 BO Standard Conveyor Clutch**

Conveyor Series Component Parts										
Item	Description	Bore	Ratio	CE-7 WO	CE-7 BO	CES-7	CER-7	CE-8 WO	CE-8 BO	
1	Retaining Ring			02070-65000	02070-65000	02070-65000	02070-65000	02070-65000	02070-65000	
2	Free Hub Assy			02070-07302	02070-07000	22070-07034	01070-01000	02080-07302	02080-07000	
3	Control Collar (4-stop only)			CW	02070-26064	02070-26064	22070-26064	02070-26064	02081-26064	02081-26064
				CCW	02070-26064	02070-26064	22070-26064	02070-26064	02082-26064	02082-26064
4	Drive Spring			CW	41071-31000	41071-31000	41071-31000	41071-31000	41081-31000	41081-31000
				CCW	41072-31000	41072-31000	41072-31000	41072-31000	41082-31000	41082-31000
5	Shaft Adapter (1-piece design)	1"			02070-24213	02070-24213			02080-24213	02080-24213
		1 3/16"						01070-24230		
		1 7/16"			02070-24220	02070-24220	22070-24220		02080-24220	02080-24220
6	Set screw			43000-71701			43000-71701			

WO = Weld-on sprocket, BO = Bolt-on sprocket. Specify sprocket if required with Free Hub assembly  
 CE-7 WO design available in stainless wash-down package